

# Foxfire Golf Club Maintenance Facility

Proposed Landscape Plan

Proposed Existing Fenced Area

# Overview

- Aurora Hills Landscaping, Pinebluff NC
- Moore County Requirements
- Foxfire Golf Club/Foxfire Village Agreement
- Estimated Completion Date: 2/15/2024
- Existing “Corrale” Plan (Estimated completion: 6/1/2024)

Moore County  
 Type 3 Buffer, 20 Ft.  
 15 Trees Per 100 Ft.  
 110 Ft. / 100 Ft. = 1.1 x 15 = 17 Trees  
 106 Trees (Growth To 10' Within 5 Years)  
 At Least 50% Evergreen Trees  
 15 Evergreen Shrubs Per 100 Ft.  
 110 Ft. / 100 Ft. = 1.1 x 15 = 17 Shrubs  
 (Growth To 10' Within 5 Years)  
 At Least 50% Evergreen Shrubs  
 All Disturbed Areas  
 Seed Or Pine Straw  
 Existing Trees Credit 2

Moore County  
 Type 3 Buffer, 20 Ft.  
 15 Trees Per 100 Ft.  
 110 Ft. / 100 Ft. = 1.1 x 15 = 17 Trees  
 106 Trees (Growth To 10' Within 5 Years)  
 At Least 50% Evergreen Trees  
 15 Evergreen Shrubs Per 100 Ft.  
 110 Ft. / 100 Ft. = 1.1 x 15 = 17 Shrubs  
 (Growth To 10' Within 5 Years)  
 At Least 50% Evergreen Shrubs  
 All Disturbed Areas  
 Seed Or Pine Straw  
 Existing Trees Credit 2

- 1-Pine Straw
- 1-Landscape Plan
- 1-Compost, Soil Improvements

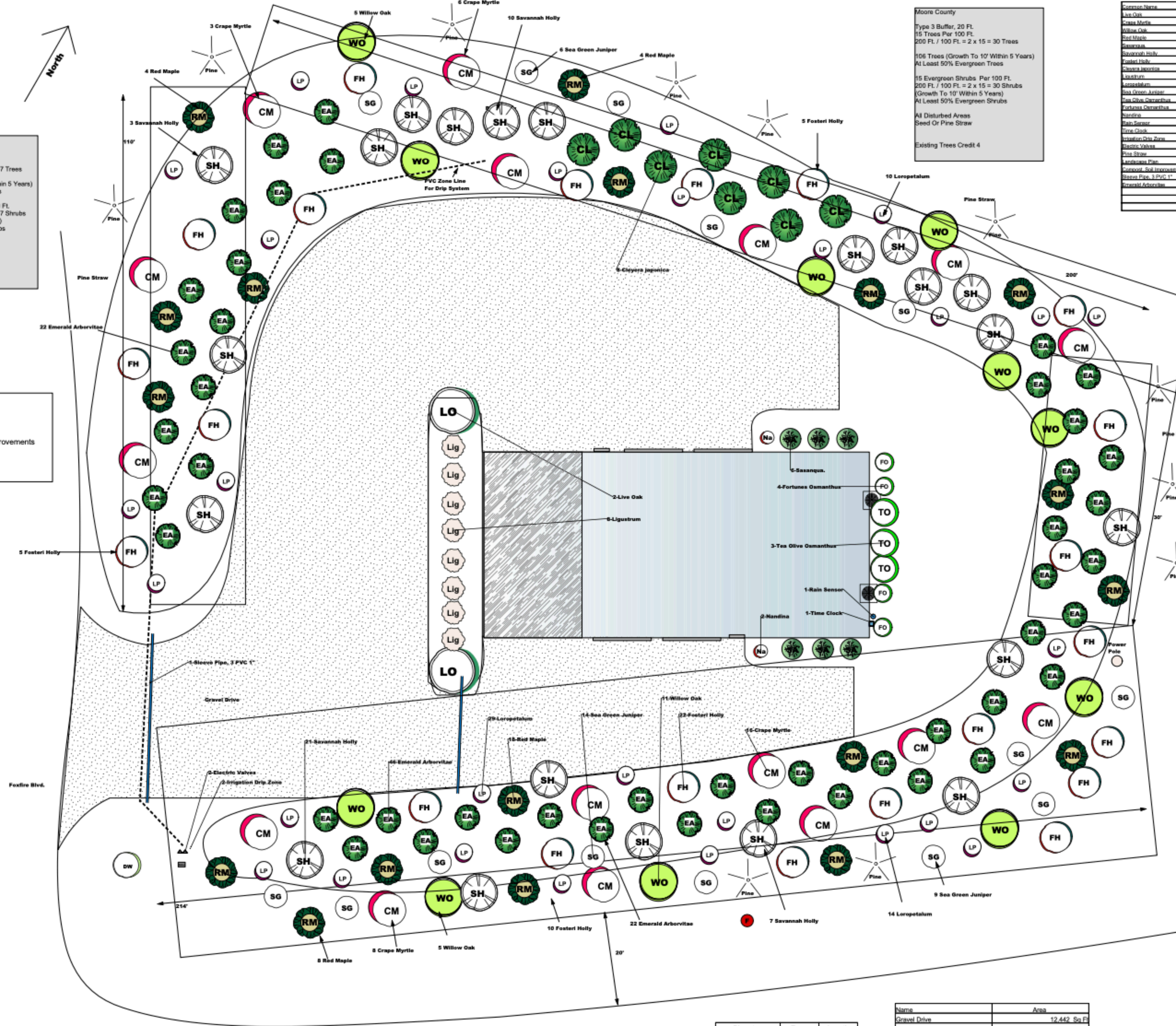
Moore County  
 Type 3 Buffer, 20 Ft.  
 15 Trees Per 100 Ft.  
 200 Ft. / 100 Ft. = 2 x 15 = 30 Trees  
 106 Trees (Growth To 10' Within 5 Years)  
 At Least 50% Evergreen Trees  
 15 Evergreen Shrubs Per 100 Ft.  
 200 Ft. / 100 Ft. = 2 x 15 = 30 Shrubs  
 (Growth To 10' Within 5 Years)  
 At Least 50% Evergreen Shrubs  
 All Disturbed Areas  
 Seed Or Pine Straw  
 Existing Trees Credit 4

Moore County  
 Type 3 Buffer, 20 Ft.  
 15 Trees Per 100 Ft.  
 90 Ft. / 100 Ft. = .9 x 15 = 14 Trees  
 106 Trees (Growth To 10' Within 5 Years)  
 At Least 50% Evergreen Trees  
 15 Evergreen Shrubs Per 100 Ft.  
 90 Ft. / 100 Ft. = .9 x 15 = 14 Shrubs  
 (Growth To 10' Within 5 Years)  
 At Least 50% Evergreen Shrubs  
 All Disturbed Areas  
 Seed Or Pine Straw  
 Existing Trees Credit 3

Moore County  
 Highway 211 Corridor Buffer  
 50 Ft. Buffer  
 Per 100 Ft.  
 214 / 100 = 2.14 x 18 = 39 Trees  
 (Growth To 10' Within 5 Years)  
 At Least 50% Evergreen Trees  
 214 / 100 = 2.14 x 25 = 54 Shrubs  
 (Growth To 5' Within 5 Years)  
 At Least 50% Evergreen Shrubs  
 All Disturbed Areas  
 Seed Or Pine Straw  
 Existing Trees Credit 3

Common Name	Latin Name	Symbol Size	Quantity
Live Oak	<i>Quercus laevis</i>	8" D	2
Crape Myrtle	<i>Lagerflora indica</i>	1.5 Gal	16
Willow Oak	<i>Quercus alba</i>	3 Gal	11
Red Maple	<i>Acer rubrum</i>	3 Gal	16
Sasanqua	<i>Argemone argentea</i>	3 Gal	8
Savannah Holly	<i>Ilex glabra</i>	5 Gal	21
Spider Lily	<i>Lycotria glabra</i>	5 Gal	22
Claytonia	<i>Claytonia virginica</i>	3 Gal	8
Leucostemum	<i>Leucostemum virginicum</i>	5 Gal	8
Aspidistra	<i>Aspidistra filix</i>	3 Gal	20
Sea Green Juniper	<i>Juniperus horizontalis</i>	3 Gal	14
Pine Olive Osmanthus	<i>Osmanthus lanceus</i>	3 Gal	3
Variegated Nandina	<i>Nandina domestica</i>	3 Gal	4
Nandina	<i>Nandina domestica</i>	3 Gal	2
Rain Sensor		Each	1
Time Clock		Each	1
Electric Valve		Each	2
Electric Valve		Each	2
Pine Straw		100 Bales	1
Landscape Plan			1
Compost			1
Soil Improvements			1
Soil Improvements			1
Soil Improvements			1
Soil Improvements			1

- Arborvitae, Emerald
- Camellia japonica
- Crape Myrtle
- Fosteri Holly
- Flowering Cherry
- Ligustrum
- Loropetalum
- Nandina
- Red Maple
- Sasanqua
- Sea Green Juniper
- Willow Oak
- Existing Dogwood
- Existing Pine



Name	Area
Gravel Drive	12,442 Sq Ft
Soil Berm	13,663 Sq Ft

1" = 10'



Project: Foxfire CC Maintenance Bldg.  
 4 Foxfire Blvd.  
 Foxfire, NC

Site: AURORA HILLS LANDSCAPING  
 1009 Currant Street Ext.  
 Pinebluff, NC 28373

Drawn By: Tawny Hovest  
 Date: 11-15-23  
 Scale: 1" = 10'

Sheet: 095-8551  
 Drawing No.: 1  
 of 1  
 LANDSCAPE PLAN



# Plantings & Material

- Note irrigation

Common Name	Latin Name	Scheduled Size	Quantity
Live Oak	Quercus virginiana	8-10'	2
Crape Myrtle	Lagerstroemia indica	5 Gal.	16
Willow Oak	Quercus phellos	3 Gal.	11
Red Maple	Acer rubrum	3 Gal.	18
Sasanqua.	Camellia sasanqua	3 Gal.	6
Savannah Holly	Ilex attenuata	5 Gal.	21
Fosteri Holly	Ilex x attenuata 'Fosteri'	5 Gal	22
Cleyera japonica	Cleyera japonica	3 Gal.	8
Ligustrum	Ligustrum japonica	5 Gal.	8
Loropetalum	Loropetalum chinese rubrum	3 Gal.	29
Sea Green Juniper	Juniperus chinensis	3 Gal.	14
Tea Olive Osmanthus	Osmanthus fragans	3 Gal	3
Fortunes Osmanthus	Osmanthus fortunei	3 Gal.	4
Nandina	Nandina domestica	3 Gal.	2
Rain Sensor		Each	1
Time Clock	Rainbird Modular	Modular	1
Irrigation Drip Zone		Tubes & Emitters	2
Electric Valves	Electric 1"	1"	2
Pine Straw		300 Bales	1
Landscape Plan		Construction Permit	1
Compost, Soil Improvements		Cu Yd	1
Sleeve Pipe, 3 PVC 1"		60 Ft	1
Emerald Arborvitae	Thuja occidentalis	Existing 24"	46

# Double Swing Barrier Gate

- Color: Green
- Estimated Completion Date: 1/15/2024



# Existing “Corrale” Plan

- Footprint reduced by 50%
- Storage of fuel, chemicals, fertilizers and aggregates
- Garbage and broken down equipment to be removed
- Concrete pad poured for chemical storage shed and aggregates. NOTE: Containment wall to prevent spills per EPA regulations
- Fence repositioned for new footprint
- Landscaping to provide “Urban Camouflage”
- Asphalt of utilized space “in future will be torn up with soil and sod added in its place”



# Sand Piles

- Sand to be moved from parking lot 'into new area in specific bays for containment.'



“We feel this plan is not only satisfactory for the Villages concerns, but in many ways goes above and beyond the original agreement. With your acceptance of this plan, we will begin working right away to facilitate in a timely manner and request the Certificate of Occupancy to be reissued so we can begin moving into our much needed new maintenance facility.”