



**FOXFIRE VILLAGE
FY24-25
CITIZEN PARTICIPATION
MEETING
JUNE 11, 2024**

General Fund Revenues FY24-25

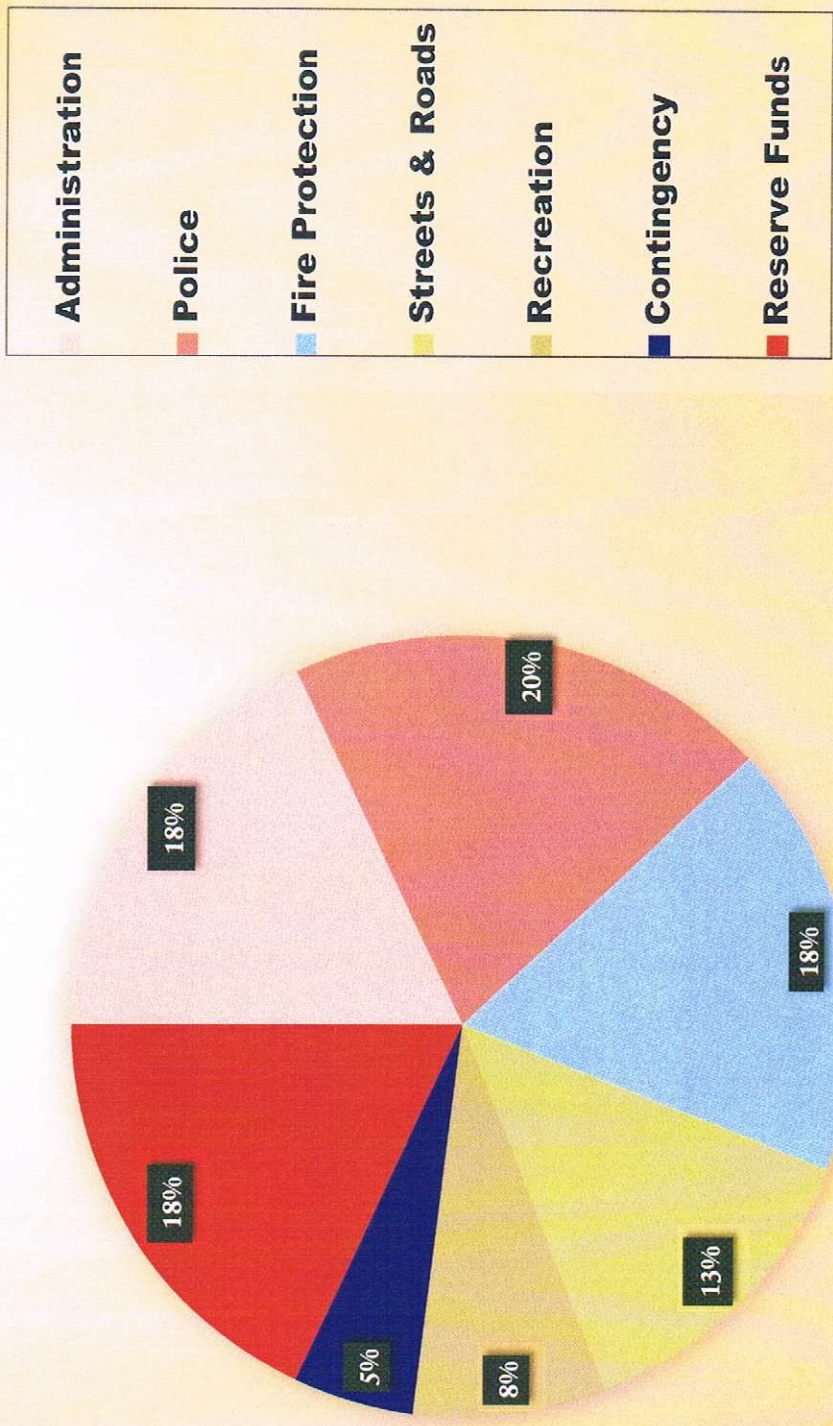


GENERAL FUND REVENUES BY AMOUNT

- Net Ad Valorem, MV and PP Tax (54%) \$992,543
- Sales Tax (27%) \$500,000
- Unrestricted Intergovernmental (4%) \$71,600
- Restricted Intergovernmental (3%) \$50,000
- Misc. Revenue, Investment Earnings (5%) \$100,000
- Permits and Fees (1%) \$15,500
- Transfer from Capital Reserves (Streets) (6%) \$114,000
- **Total Budgeted Revenue \$1,843,643**

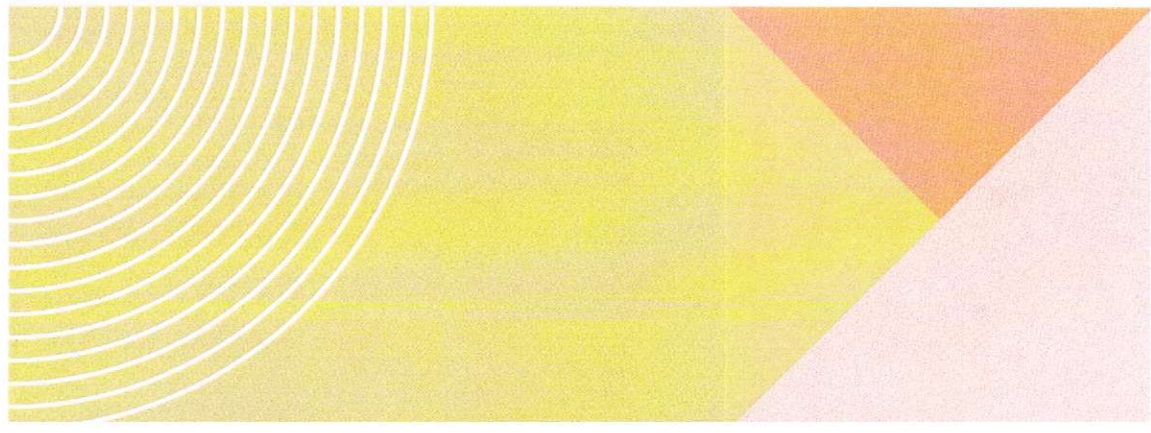


General Fund Expenses FY24-25

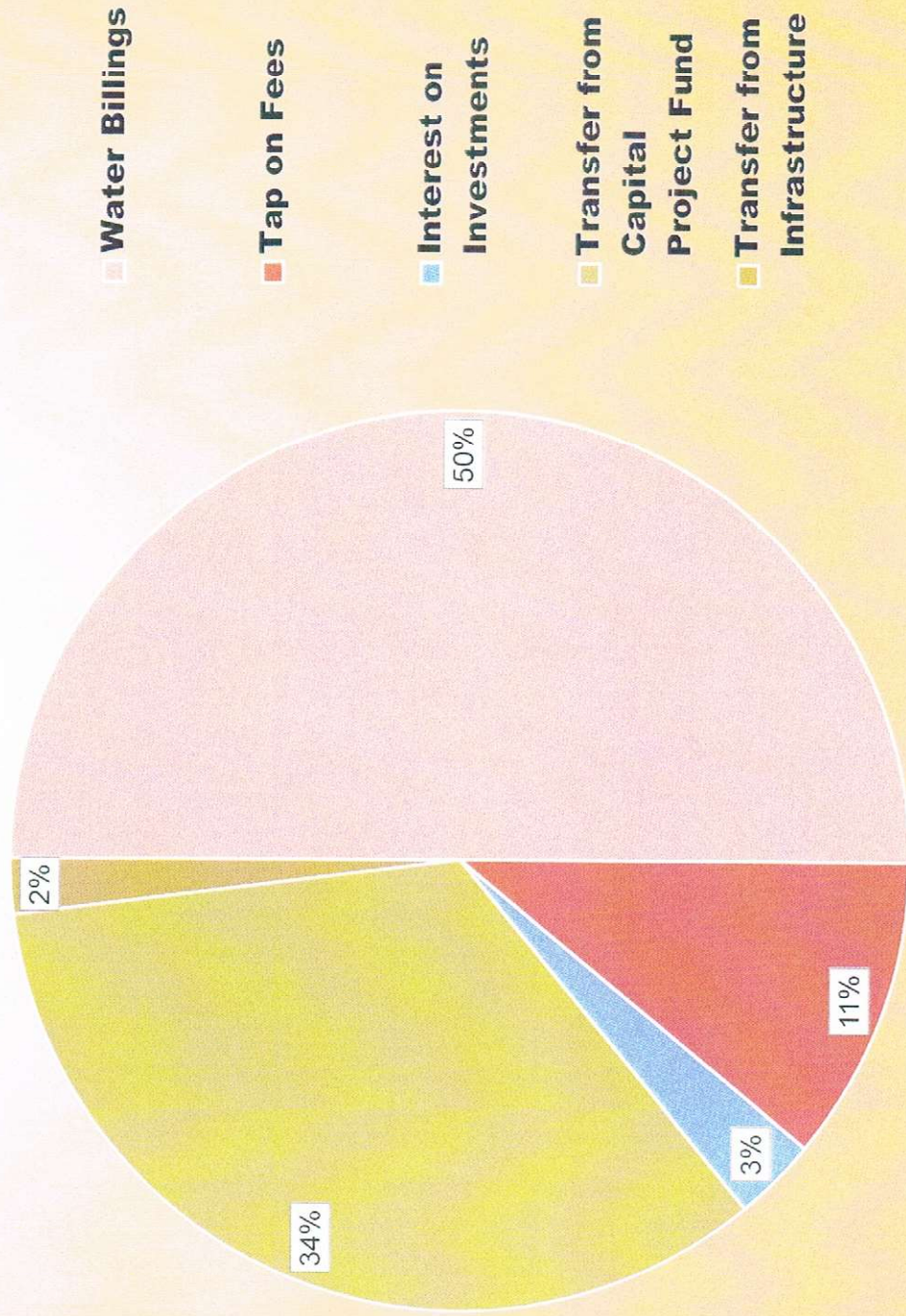


GENERAL FUND EXPENSES BY AMOUNT

- Administration (18%) \$323,013
- Police (20%) \$371,300
- Fire Protection (18%) \$329,500
- Streets & Roads (13%) \$231,500
- Recreation (8%) \$143,300
- Contingency (5%) \$105,043
- Reserve Funds (18%) \$340,000
- **Total Budgeted Expenses \$1,843,643**



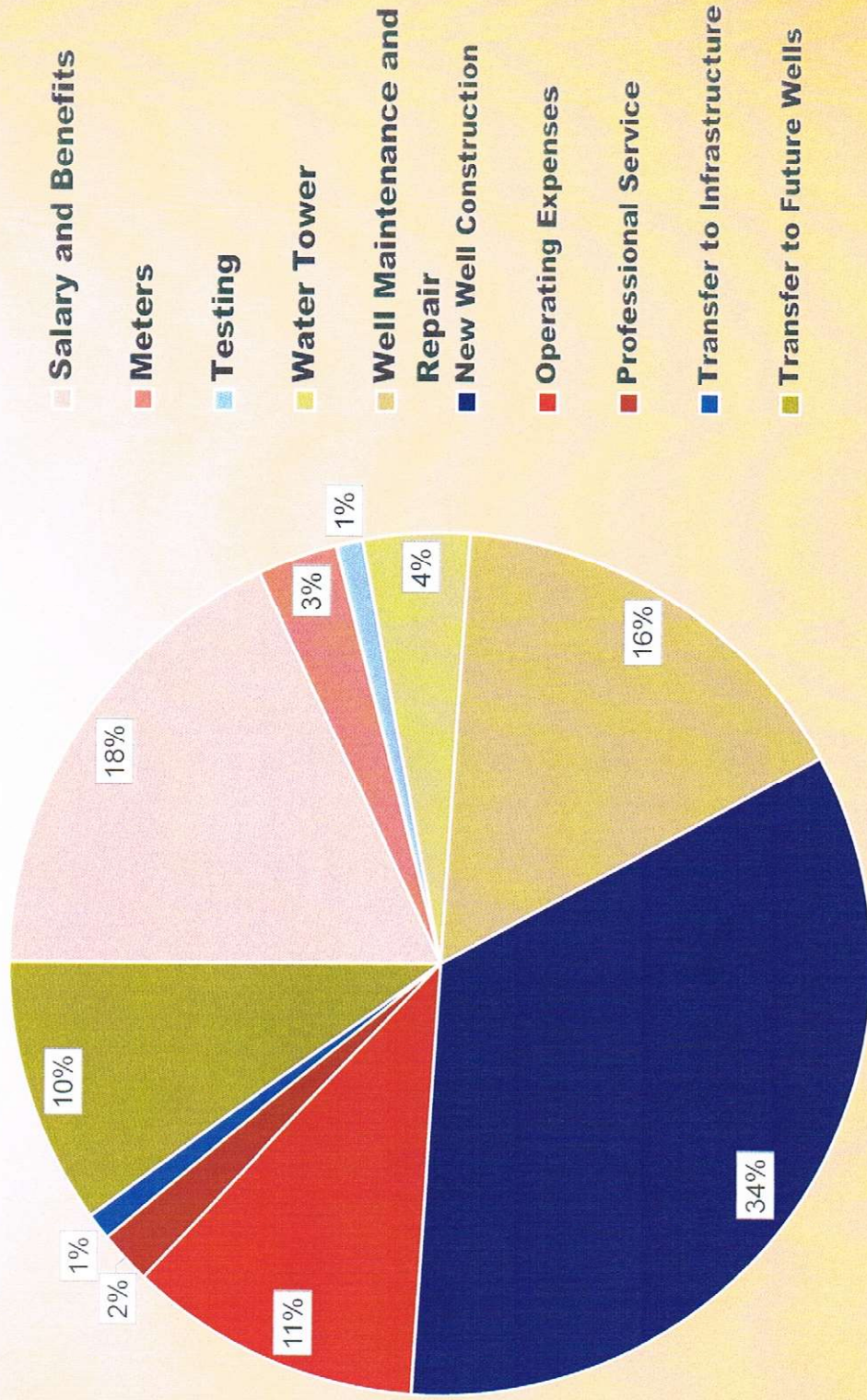
Water Fund Revenues FY24-25



WATER FUND REVENUES BY AMOUNT

- Water Billings (50%) \$331,000
- Tap on Fees (11%) \$70,000
- Interest on Investments (3%) \$20,000
- Transfer from Capital Project Fund (34%) \$223,686
- Transfer from Infrastructure (2%) \$11,000
- **Total Budgeted Revenues \$655,686**

Water Fund Expenses FY24-25



WATER FUND EXPENSES BY AMOUNT

• Salary & Benefits (18%)	\$116,200
• Meters (3%)	\$20,000
• Testing (1%)	\$6,800
• Water Tower(4%)	\$27,800
• Well Maint & Repair (16%)	\$102,450
• Operating Expenses (11%)	\$73,550
• Professional Service (2%)	\$10,200
• Transfer to Infrastructure (1%)	\$10,000
• Transfer to Future Wells (10%)	\$65,000
• New Well Construction (34%)	\$223,686

DEPARTMENT HIGHLIGHTS

VALUING VILLAGE STAFF

Administration

- Upgrade --Village Administrator
- New --Administrative Asst
- Restructured -- Bookkeeper
- New Internal controls --CPA Relationship
- New License --Water Technician
- Website update
- Online permit application and payment

Police

- Increased salaries = Retention
- Chief
- Corporal
- Patrol Officers

Fire

- New County Funding formula
- Inter-local agreement

DEPARTMENT HIGHLIGHTS

Streets and Roads

- Paving Pine Tree Terrace
- Fixing Village Drive "Dip"

Recreation

- Park trail fixes – 2 worst
- Multi-year plan to repair trails

Water

- New Well
- Increased well maintenance

Reserves and Contingency

- Important part of budget plan
- Capital Reserve
- Police Vehicle Reserve
- Street Reserve
- Separation Allowance Reserve
- Employee Compensation Reserve